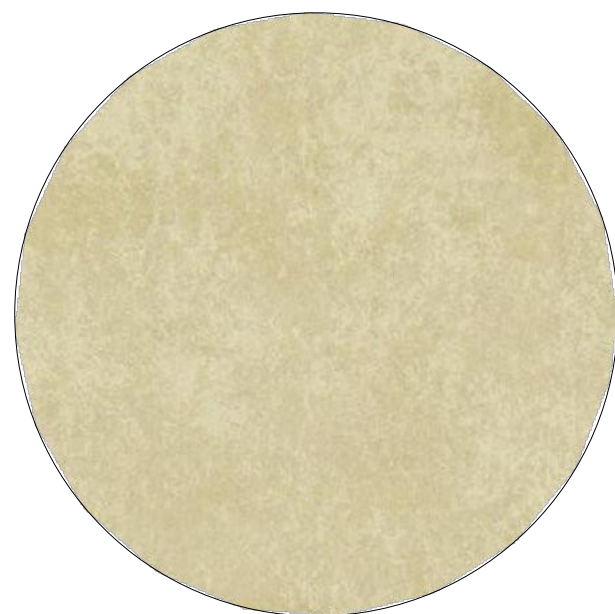




1 SMOOTH STUCCO FINISH  
SW-7005 PURE WHITE  
SHERWIN-WILLIAMS  
OR EQUIVALENT APPROVED  
BY ARCHITECT



2 SMOOTH STUCCO FINISH  
AF-685 THUNDER  
BENJAMIN MOORE  
OR EQUIVALENT APPROVED  
BY ARCHITECT



3 SMOOTH STUCCO FINISH  
CHAMPAGNE GOLD  
OR EQUIVALENT APPROVED  
BY ARCHITECT



4 ALUMINUM CLADDING PANELS  
CHAMPAGNE GOLD  
OR EQUIVALENT APPROVED  
BY ARCHITECT



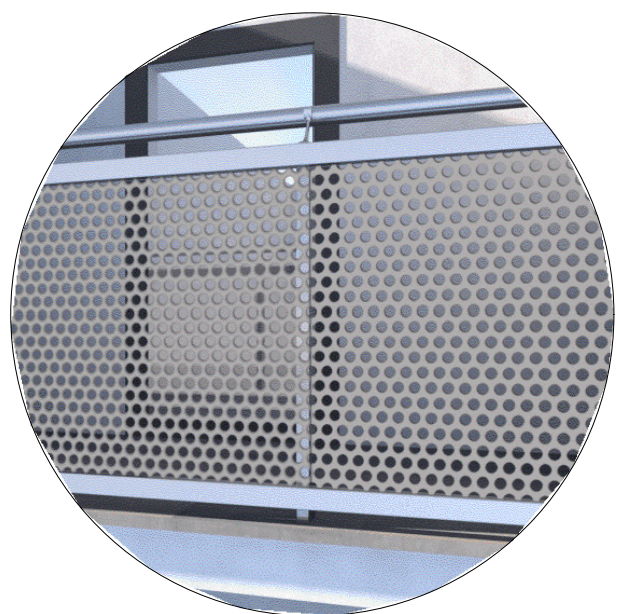
5 WOOD-POLYPROPYLENE COMPOSITE  
NICHIIA RIFTSAWN CHESTNUT  
OR EQUIVALENT APPROVED  
BY ARCHITECT



6 TINTED GLASS FOR STOREFRONTS,  
WINDOWS, BALCONY DOORS  
VIRACON OPTIGRAY  
OR EQUIVALENT APPROVED  
BY ARCHITECT



7 ALUMINUM FRAME  
2134-30 IRON MOUNTAIN  
BENJAMIN MOORE  
OR EQUIVALENT APPROVED  
BY ARCHITECT



8 METAL MESH RAILING  
CHAMPAGNE GOLD  
OR EQUIVALENT APPROVED  
BY ARCHITECT



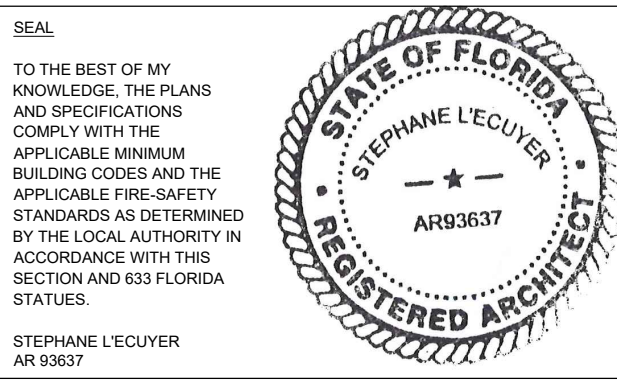
9 FACTORY PAINTED  
ALUMINUM EXTRUSIONS  
WOOD COLOR  
OR EQUIVALENT APPROVED  
BY ARCHITECT



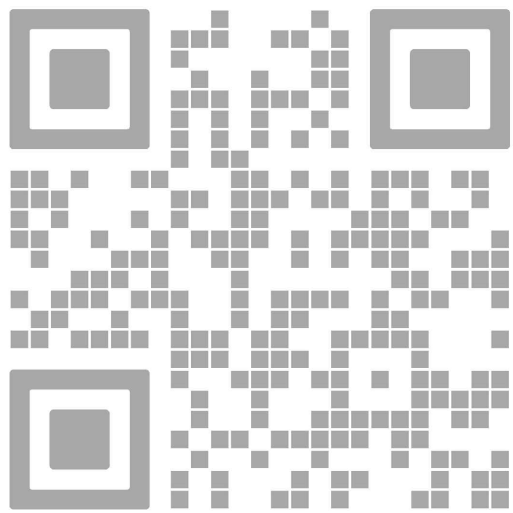
10 PARKING GARAGE SCREENING  
VENTILATED METAL MESH



**absolute-idea.com**  
CANAL PARK  
3323 NE 163rd Street, Suite 200 North Miami Beach, FL 33160  
T 305.792.0015 F 305.931.0279 @info@absolute-idea.com



ISSUE FOR:  
**DRC SUBMITTAL**



REV.	DATE	DESCRIPTION
01	01-29-2025	D.R.C. SUBMITTAL

ALL MEASUREMENTS MUST BE VERIFIED BEFORE BEGINNING THE WORK. NO MEASUREMENTS ARE TO BE SCALED DIRECTLY FROM THIS DRAWING.

Key section

Client  
**VERA FUND**  
NICK POLYUSHKIN  
& YURI KHARITONENKOV  
TEL: 305.833.3303

Project  
**1600 S FEDERAL HIGHWAY  
(MIXED-USE PROJECT)**  
1600 SOUTH FEDERAL HIGHWAY,  
POMPAHO BEACH, FL 33062

Title	
EAST ELEVATION	
Drawn <b>J. WU</b>	Field <b>ARCHITECTURE</b>
Verified <b>N. TREMBLAY</b>	Scale <b>as shown</b>
Approved <b>S. L'ECUYER</b>	Date <b>01-29-2025</b>
Project <b>J. WU</b>	Dwg. no. <b>A-504</b>

01 EAST ELEVATION  
A-504 SCALE: 1"= 40'-0"

**DRC**

PZ24-120024-338  
03/05/2025